

Guatemalan cholesterol example summary

The UNIVARIATE Procedure
Variable: level
location = rural

Basic Statistical Measures			
Location		Variability	
Mean	157.0204	Std Deviation	31.74868
Median	152.0000	Variance	1008
Mode	108.0000	Range	136.00000
		Interquartile Range	38.00000

Note: The mode displayed is the smallest of 9 modes with a count of 2.

Quantiles (Definition 5)	
Level	Quantile
100% Max	231
99%	231
95%	223
90%	204
75% Q3	174
50% Median	152
25% Q1	136
10%	115
5%	108
1%	95
0% Min	95

Extreme Values					
Lowest			Highest		
Order	Value	Freq	Order	Value	Freq
1	95	1	36	204	1
2	108	2	37	220	1
3	114	1	38	223	1
4	115	1	39	226	1
5	124	1	40	231	1

Guatemalan cholesterol example summary

The UNIVARIATE Procedure
Variable: level
location = urban

Basic Statistical Measures			
Location		Variability	
Mean	216.8667	Std Deviation	39.92015
Median	206.0000	Variance	1594
Mode	205.0000	Range	197.00000
		Interquartile Range	43.00000

Note: The mode displayed is the smallest of 2 modes with a count of 3.

Quantiles (Definition 5)	
Level	Quantile
100% Max	330
99%	330
95%	284
90%	279
75% Q3	239
50% Median	206
25% Q1	196
10%	175
5%	155
1%	133
0% Min	133

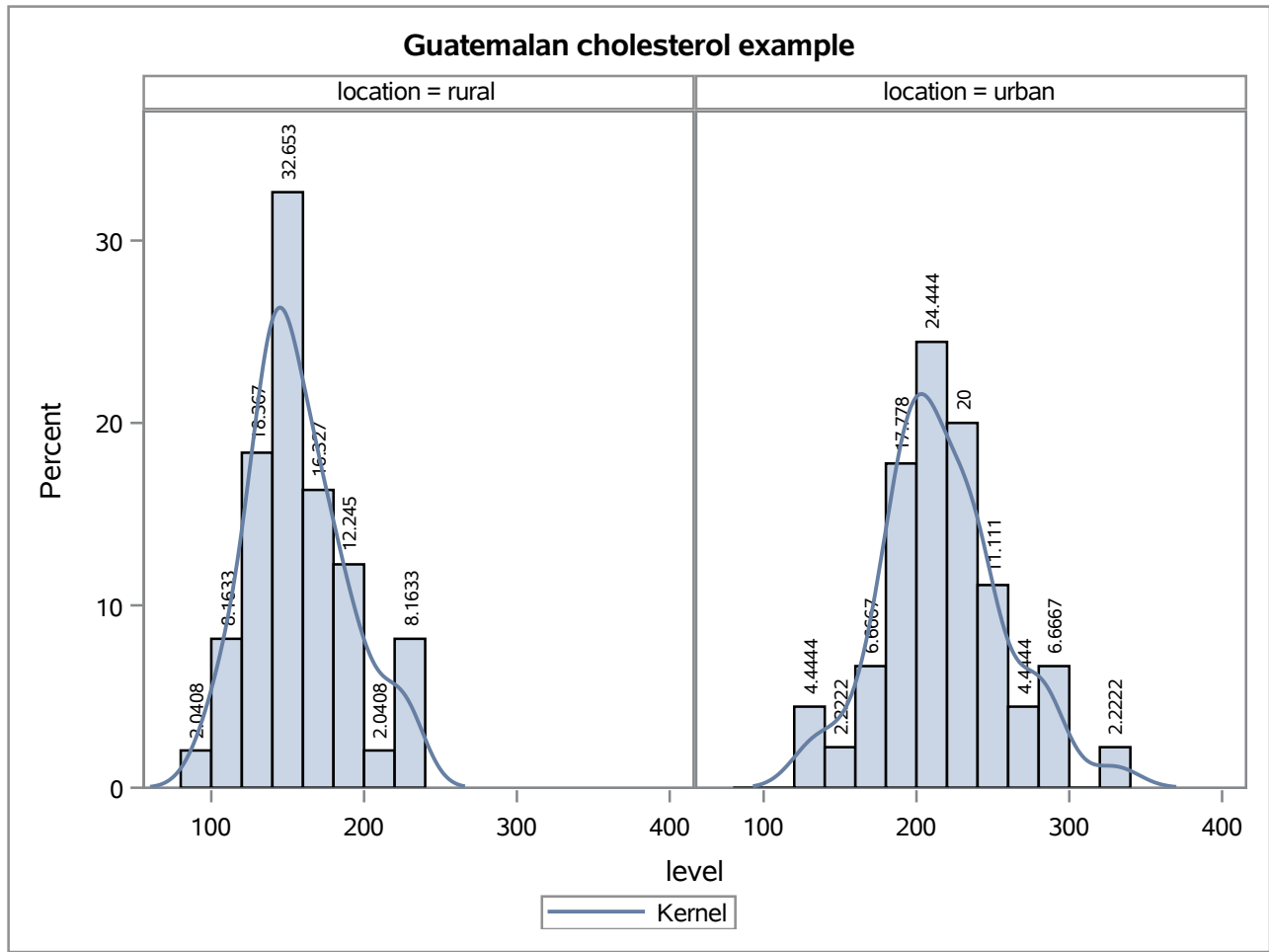
Extreme Values					
Lowest			Highest		
Order	Value	Freq	Order	Value	Freq
1	133	1	32	252	1
2	134	1	33	273	1
3	155	1	34	279	1
4	170	1	35	284	3
5	175	1	36	330	1

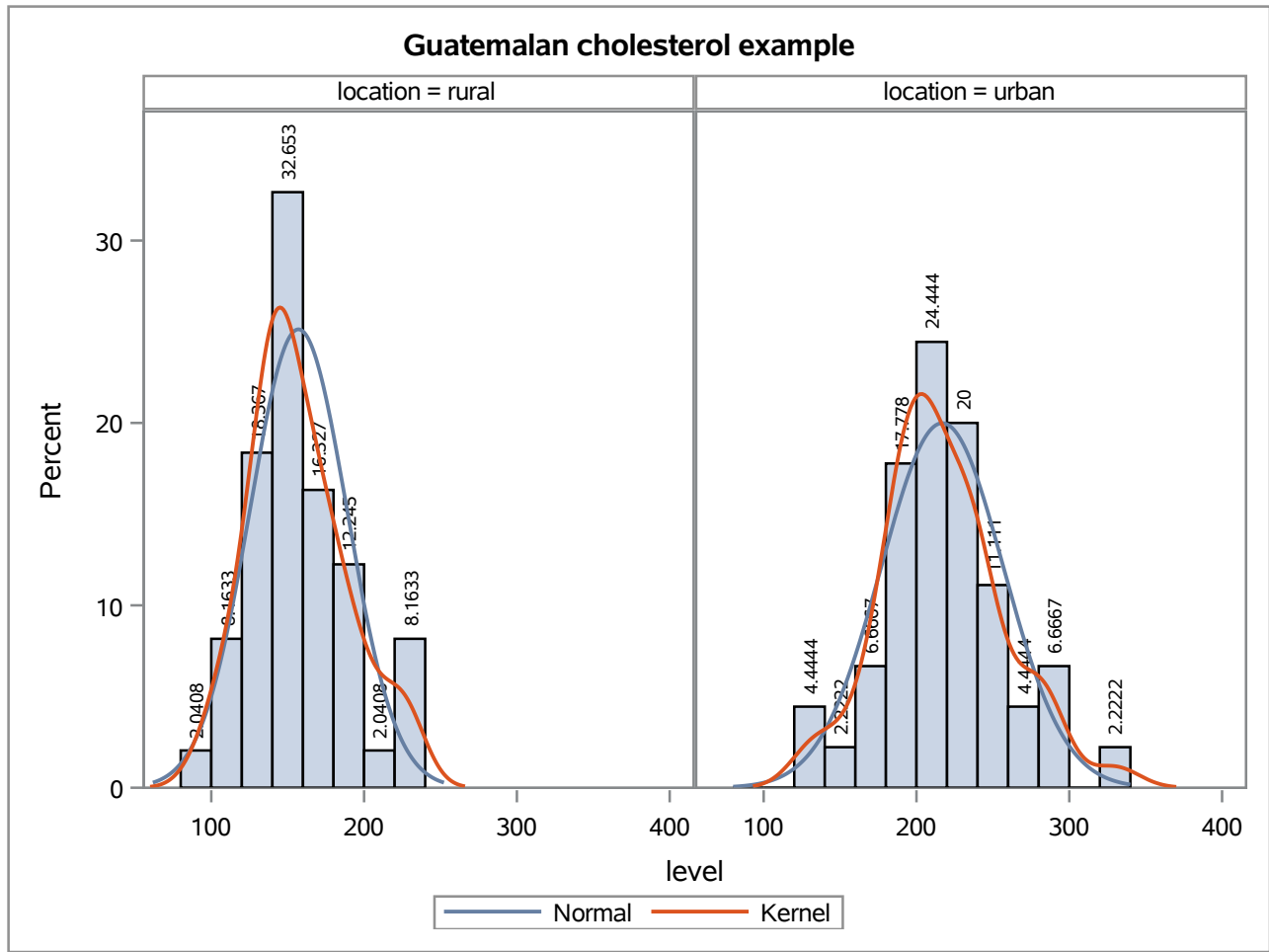
Guatemalan cholesterol example summary**The MEANS Procedure**

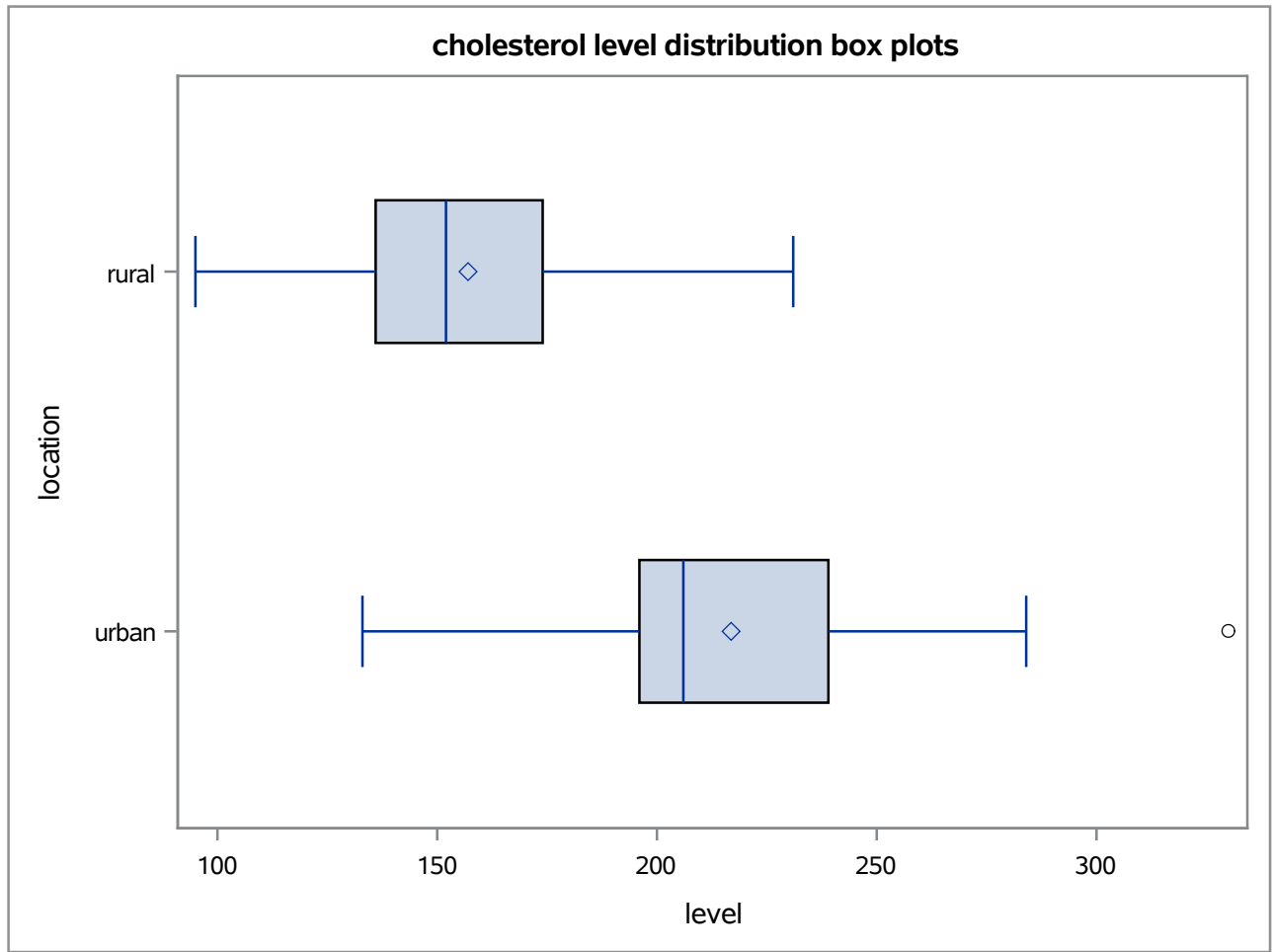
Analysis Variable : level											
location	N Obs	N	Minimum	Lower Quartile	Median	Upper Quartile	Maximum	Range	Quartile Range	Mean	Std Dev
rural	49	49	95.00	136.00	152.00	174.00	231.00	136.00	38.00	157.02	31.75
urban	45	45	133.00	196.00	206.00	239.00	330.00	197.00	43.00	216.87	39.92

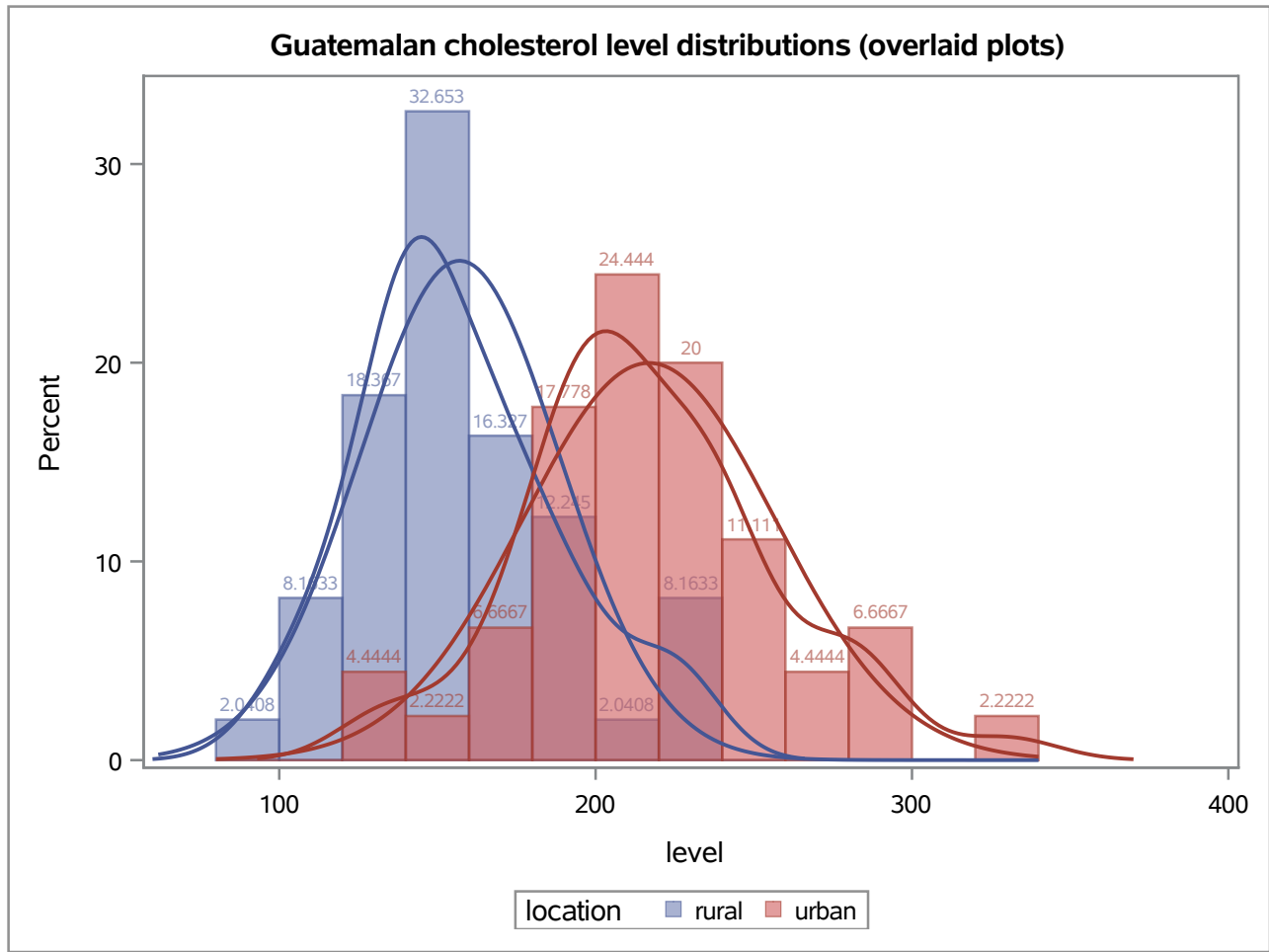
Guatemalan cholesterol example summary**The MEANS Procedure**

Analysis Variable : level														
location	N Obs	1st Pctl	5th Pctl	10th Pctl	20th Pctl	30th Pctl	40th Pctl	50th Pctl	60th Pctl	70th Pctl	80th Pctl	90th Pctl	95th Pctl	99th Pctl
rural	49	95.00	108.00	115.00	131.00	140.00	144.00	152.00	158.00	172.00	181.00	204.00	223.00	231.00
urban	45	133.00	155.00	175.00	188.50	199.00	202.50	206.00	224.50	234.00	243.00	279.00	284.00	330.00

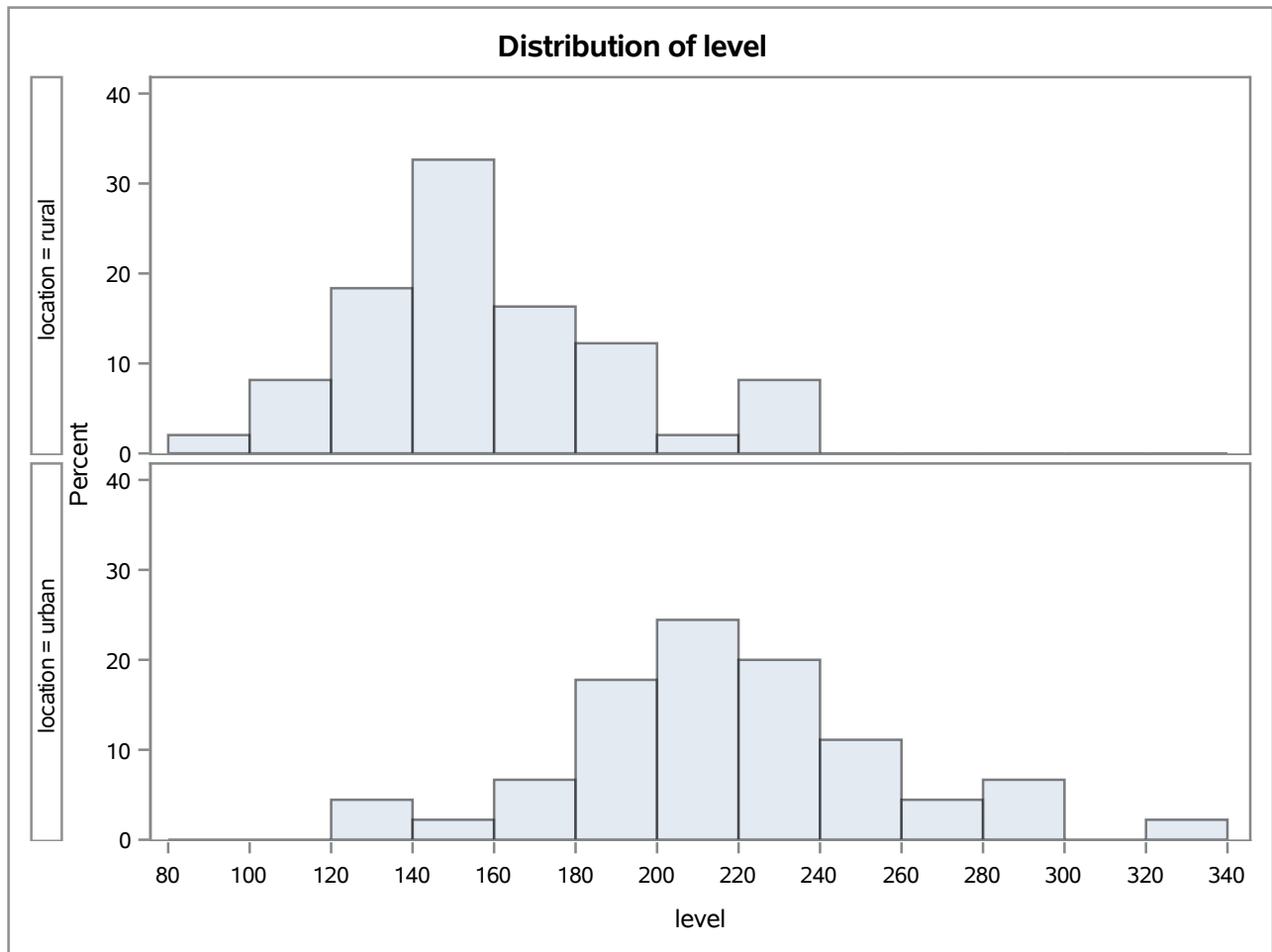








The UNIVARIATE Procedure



cholesterol level relative frequency distributions
binstart is the left endpoint of the interval -- left endpoint is included in frequency
these intervals are the same as those of the histograms

location=rural

Obs	binstart	frequency	percentage
1	80	1	2.0408
2	100	4	8.1633
3	120	9	18.3673
4	140	16	32.6531
5	160	8	16.3265
6	180	6	12.2449
7	200	1	2.0408
8	220	4	8.1633

location=urban

Obs	binstart	frequency	percentage
9	120	2	4.4444
10	140	1	2.2222
11	160	3	6.6667
12	180	8	17.7778
13	200	11	24.4444
14	220	9	20.0000
15	240	5	11.1111
16	260	2	4.4444
17	280	3	6.6667
18	300	0	0.0000
19	320	1	2.2222

Guatemalan cholesterol example summary without the outlier

The UNIVARIATE Procedure
Variable: level
location = rural

Basic Statistical Measures			
Location		Variability	
Mean	157.0204	Std Deviation	31.74868
Median	152.0000	Variance	1008
Mode	108.0000	Range	136.00000
		Interquartile Range	38.00000

Note: The mode displayed is the smallest of 9 modes with a count of 2.

Quantiles (Definition 5)	
Level	Quantile
100% Max	231
99%	231
95%	223
90%	204
75% Q3	174
50% Median	152
25% Q1	136
10%	115
5%	108
1%	95
0% Min	95

Extreme Values					
Lowest			Highest		
Order	Value	Freq	Order	Value	Freq
1	95	1	36	204	1
2	108	2	37	220	1
3	114	1	38	223	1
4	115	1	39	226	1
5	124	1	40	231	1

Guatemalan cholesterol example summary without the outlier

The UNIVARIATE Procedure
Variable: level
location = urban

Basic Statistical Measures			
Location		Variability	
Mean	214.2955	Std Deviation	36.41785
Median	205.5000	Variance	1326
Mode	205.0000	Range	151.00000
		Interquartile Range	44.50000

Note: The mode displayed is the smallest of 2 modes with a count of 3.

Quantiles (Definition 5)	
Level	Quantile
100% Max	284.0
99%	284.0
95%	284.0
90%	273.0
75% Q3	237.5
50% Median	205.5
25% Q1	193.0
10%	175.0
5%	155.0
1%	133.0
0% Min	133.0

Extreme Values					
Lowest			Highest		
Order	Value	Freq	Order	Value	Freq
1	133	1	31	249	1
2	134	1	32	252	1
3	155	1	33	273	1
4	170	1	34	279	1
5	175	1	35	284	3

Guatemalan cholesterol example summary without the outlier**The MEANS Procedure**

Analysis Variable : level											
location	N Obs	N	Minimum	Lower Quartile	Median	Upper Quartile	Maximum	Range	Quartile Range	Mean	Std Dev
rural	49	49	95.00	136.00	152.00	174.00	231.00	136.00	38.00	157.02	31.75
urban	44	44	133.00	193.00	205.50	237.50	284.00	151.00	44.50	214.30	36.42

Guatemalan cholesterol example summary without the outlier**The MEANS Procedure**

Analysis Variable : level														
location	N Obs	1st Pctl	5th Pctl	10th Pctl	20th Pctl	30th Pctl	40th Pctl	50th Pctl	60th Pctl	70th Pctl	80th Pctl	90th Pctl	95th Pctl	99th Pctl
rural	49	95.00	108.00	115.00	131.00	140.00	144.00	152.00	158.00	172.00	181.00	204.00	223.00	231.00
urban	44	133.00	155.00	175.00	188.00	199.00	201.00	205.50	222.00	234.00	242.00	273.00	284.00	284.00